



Managing cyber risks in Industrial Control Systems and Operational Technology environments

Deloitte and Dragos extend and enhance service to customers

Increased connectivity—among industrial facilities, supply chains, customers, and operations—brings new operational cyber risks. It also brings greater potential exposure to cyberattacks that can have a more extensive impact.

The Deloitte and Dragos collaboration helps organizations manage cyber risks in industrial control systems (ICS) and operational technology (OT) environments. By using a combination of

innovative cybersecurity products and services, this advanced cyber risk offering provides a more complete picture of an organization's threat landscape to better inform scenario planning and response.

The combined end-to-end offering leverages talent and technology in the Dragos platform, Threat Operations Center (TOC), and Intelligence team. Together, these capabilities form a powerful ecosystem built to provide

strong industrial cyber identification, monitoring, and defense capabilities. Underpinning this ecosystem is a distinguished approach to secure data collection, which enables ICS asset owners and operators to set company-specific and compliance-based standards for what data can be shared externally. It also allows users to control the obfuscation of data to limit visibility, while allowing security teams to identify malicious activity and respond accordingly.

DRAGOS **Deloitte.**

DISTINGUISHING CAPABILITIES

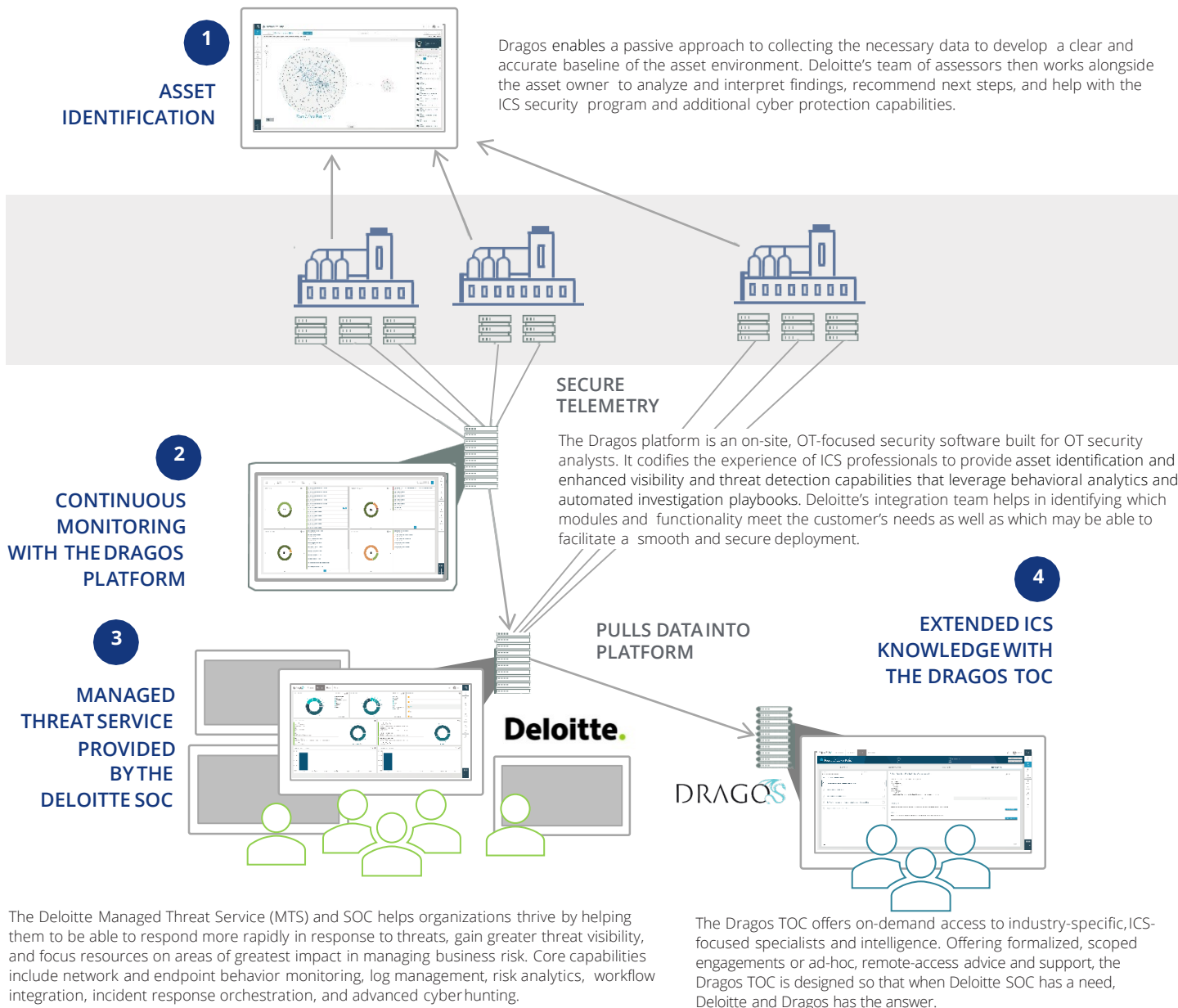


JOINT OFFERINGS

- 1 Deloitte uses **Dragos products for asset inventory and ICS assessments** to passively identify and map networked assets in customers' ICS and surrounding networks.
- 2 Deloitte assists with deploying the **Dragos Platform for continuous monitoring** in the environment, thus enabling enhanced asset identification, threat detection, and efficient response through automation.
- 3 **Deloitte Secure Operations Center (SOC) as a managed service** helps with surges, requirements, and unmanned hours. The Deloitte SOC is also powered by the Dragos Platform for ICS environments.
- 4 Deloitte leverages the experience of the **Dragos Threat Operations Center (TOC) for extended ICS knowledge**, training, and intelligence to better support customers' risk evaluations and managed service needs.

Deloitte and Dragos offerings

Deployment approach and network communications offers an easily scalable, layered approach with deeper support.



TRAINING

Includes ICS specific training for assessment, integration, and security operations teams on the Dragos ICS cyber range.

INTELLIGENCE

Dragos delivers situational awareness and actionable intelligence to help defend ICS networks from modern threats. This intelligence is offered via Dragos WorldView, the industrial cybersecurity industry's leading product exclusively focused on ICS threat intelligence. It provides world-class situational awareness reports and assessments on ICS threat news. Prepared by experienced Dragos ICS/OT threat analysts, it is an essential supplement to any IT-focused intelligent product used by IT or OT professionals responsible for an ICS network.

Sean Peasley

Partner | Deloitte Risk and Financial Advisory
 Cyber Risk Services Consumer & Industrial Products Leader | IoT Security Leader
 Deloitte & Touche LLP
 +1 714 436 7410
speasley@deloitte.com

Ramsey Hajj

Senior Manager | Deloitte Risk and Financial Advisory
 Deloitte & Touche LLP
 +1 561 962 7843
rhajj@deloitte.com

This document contains general information only and Deloitte is not, by means of this document, rendering accounting, business, financial, investment, legal, tax, or other professional advice or services. This document is not a substitute for such professional advice or services, nor should it be used as a basis for any decision or action that may affect your business. Before making any decision or taking any action that may affect your business, you should consult a qualified professional advisor. Deloitte shall not be responsible for any loss sustained by any person who relies on this document.

As used in this document, "Deloitte Risk and Financial Advisory" means Deloitte & Touche LLP, which provides audit and risk advisory services; Deloitte Financial Advisory Services LLP, which provides forensic, dispute, and other consulting services; and its affiliate, Deloitte Transactions and Business Analytics LLP, which provides a wide range of advisory and analytics services. These entities are separate subsidiaries of Deloitte LLP. Please see www.deloitte.com/us/about for a detailed description of our legal structure. Certain services may not be available to attest clients under the rules and regulations of public accounting.